

trausim®



Let your smile brighter.

DENTAL IMPLANT

Whole series solutions
One-stop service center

Jiangsu Trausim Medical Instrument Co., Ltd.

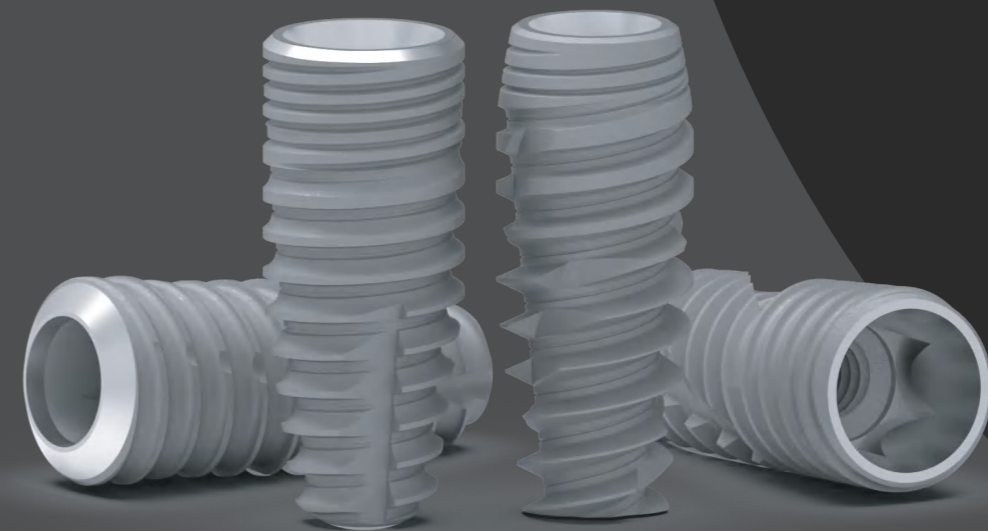
No. 18 Jincheng Road, Wujin Economic Development Zone, Changzhou, Jiangsu, China

TEL:86-0519-86391029

FAX:86-519-86398597

Email: market@trausim.com

© Jiangsu Lanling Chemical Group Co., Ltd. owns copyright and related rights, and the data, without the consent of the obligee shall not, without copying, Distribution, adapted, or transmitted to the public.





SINCE 2010

Jiangsu Trausim Medical Instrument Co., Ltd. established in 2010, is one of the largest Chinese dental implant manufacturers. We started export business since 2018 with CE, ISO and FDA certificates. We offer clients:

- 5 series dental implant systems
- OEM service of dental implants and prosthetics
- digital products for dental labs
- dental centrifuges and instruments

To be the most reliable Chinese dental implant brand

Certificates



FDA



ISO 13485



CFDA

Dental Bone Tack Pin Box

Note: Please sterilize before use

Pin holder
102.0002 Straight
102.0005 Curved

Pin Guide
102.2601

Pin box
102.5910

Pin
3mm 102.0704
5mm 102.0706

Pin Guide
-Tapered extension design, convenient to cut into the bottom of pin head

Pin holder
-Non-slip design, comfortable to hold
-Anti-dislocation structure in working end, grab more reliable

Pin
-Body taper design, facilitate the application of force and prevent dislocation

Pin material
-Titanium alloy material, excellent bio-compatibility

www.trausim.com

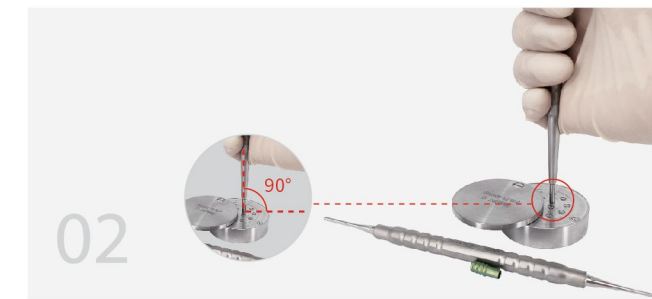
No.18, Jincheng Road, Wujin Economic and Development Zone, Changzhou, 213149, Jiangsu, China

Jiangsu Trausim Medical Instrument Co., Ltd.

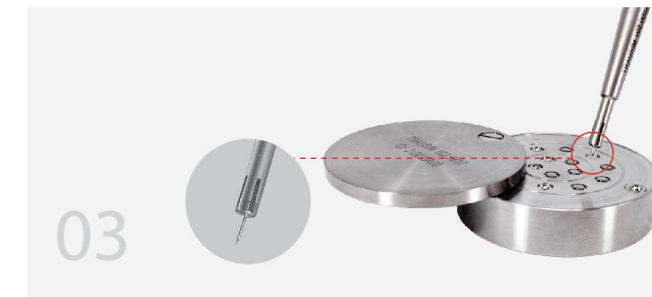
Quick Guide



Step 1: Prepare the pin channel on the corresponding use area by using the tip of pin guide.



Step 2: Before operation, select the appropriate size and quantity of pins and put them into the pin box for high temperature and high pressure disinfection. When in use, hold the handle of pin holder with four fingers, buckle the thumb to the end of pin holder, and press the corresponding pins position at 90° vertically to hold it.



Step 3: The pin is held by pin holder.



Step 4: Put the pin into the prepared channel, press it firmly, tilt the pin holder sideways and remove it.



Step 5: Use the flat working end of pin guide to remove pins.