

trausim®



Let your smile brighter.

DENTAL IMPLANT

Whole series solutions
One-stop service center

Jiangsu Trausim Medical Instrument Co., Ltd.

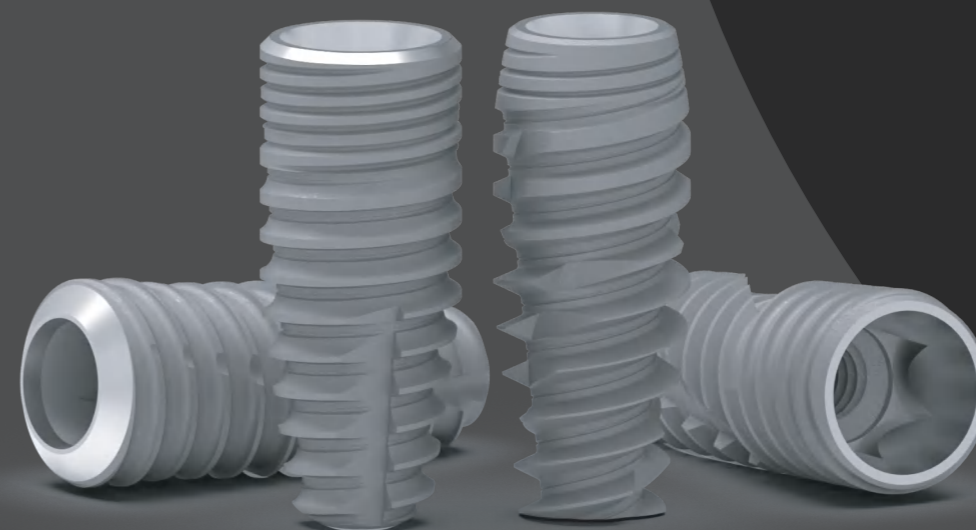
No. 18 Jincheng Road, Wujin Economic Development Zone, Changzhou, Jiangsu, China

TEL:86-0519-86391029

FAX:86-519-86398597

Email: market@trausim.com

© Jiangsu Lanling Chemical Group Co., Ltd. owns copyright and related rights, and the data, without the consent of the obligee shall not, without copying, Distribution, adapted, or transmitted to the public.





SINCE 2010

Jiangsu Trausim Medical Instrument Co., Ltd. established in 2010, is one of the largest Chinese dental implant manufacturers. We started export business since 2018 with CE, ISO and FDA certificates. We offer clients:

- 5 series dental implant systems
- OEM service of dental implants and prosthetics
- digital products for dental labs
- dental centrifuges and instruments

To be the most reliable Chinese dental implant brand

Certificates



FDA



ISO 13485



CFDA

Guide Kit



Guide Kit 110.5900

Note: * means optional

Drill Guider	Tissue Punch
--------------	--------------

φ 2.0/2.5mm	110.2025	1
φ 2.8/3.0mm	110.2830	2
φ 3.3/3.5mm	110.3335	3
φ 3.8/4.3mm	110.3843	4

φ 3.8mm	108.0738	10
φ 4.3mm	108.0743	11
φ 5.0mm	108.0750	12



Fix Pin	Pilot Drill (for guider)
---------	--------------------------

Φ1.5×20	110.1015	5 6 7
---------	----------	-------

Φ2.0×25	110.1320	13
---------	----------	----



Pilot Drill (for fix pin)	
---------------------------	--

Φ1.5×20	110.0015	8
---------	----------	---

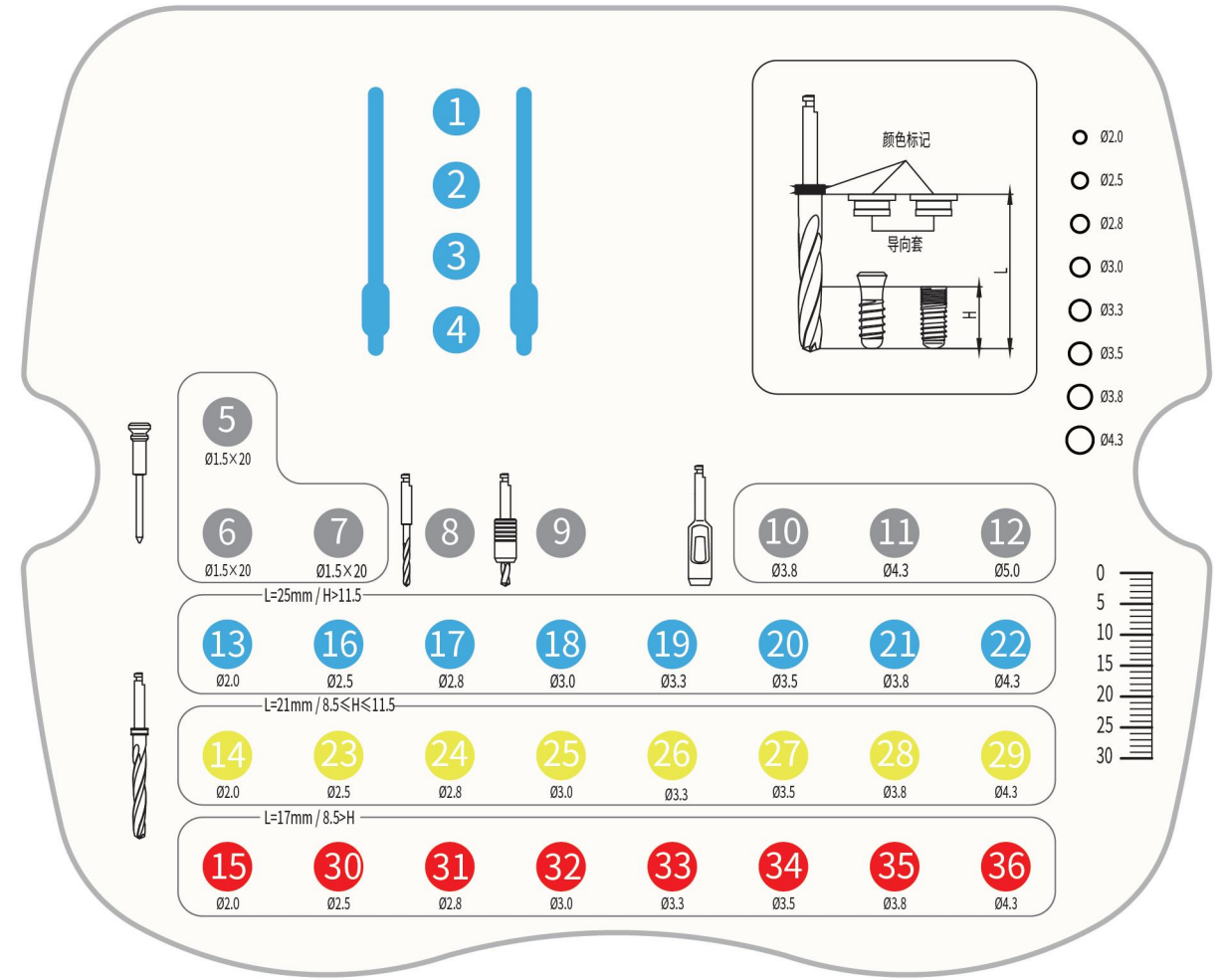
Φ2.0×21	110.1220	14
---------	----------	----



Positioning Drill	
-------------------	--

Φ2.0×5	110.1020	9
--------	----------	---

Φ2.0×17	110.1120	15
---------	----------	----



Twist Drill	L=25mm	Twist Drill	L=17mm
-------------	--------	-------------	--------

φ 2.5mm	110.1325	16	φ 2.5mm	110.1125	30
φ 2.8mm	110.1328	17	φ 2.8mm	110.1128	31
φ 3.0mm	110.1330	18	φ 3.0mm	110.1130	32
φ 3.3mm	110.1333	19	φ 3.3mm	110.1133	33
φ 3.5mm	110.1335	20	φ 3.5mm	110.1135	34
φ 3.8mm	110.1338	21	φ 3.8mm	110.1138	35
φ 4.3mm	110.1343	22	φ 4.3mm	110.1143	36

φ 2.5mm	110.1125	30
φ 2.8mm	110.1128	31
φ 3.0mm	110.1130	32
φ 3.3mm	110.1133	33
φ 3.5mm	110.1135	34
φ 3.8mm	110.1138	35
φ 4.3mm	110.1143	36



Twist Drill	L=21mm	Positioning
-------------	--------	-------------

φ 2.5mm	110.1225	23
φ 2.8mm	110.1228	24
φ 3.0mm	110.1230	25
φ 3.3mm	110.1233	26
φ 3.5mm	110.1235	27
φ 3.8mm	110.1238	28
φ 4.3mm	110.1243	29

φ5.1x4.0mm	* 110.4912	37
φ1.5x11.0mm	* 110.4913	38

