

trausim®



Let your smile brighter.

# DENTAL IMPLANT

Whole series solutions  
One-stop service center

Jiangsu Trausim Medical Instrument Co., Ltd.

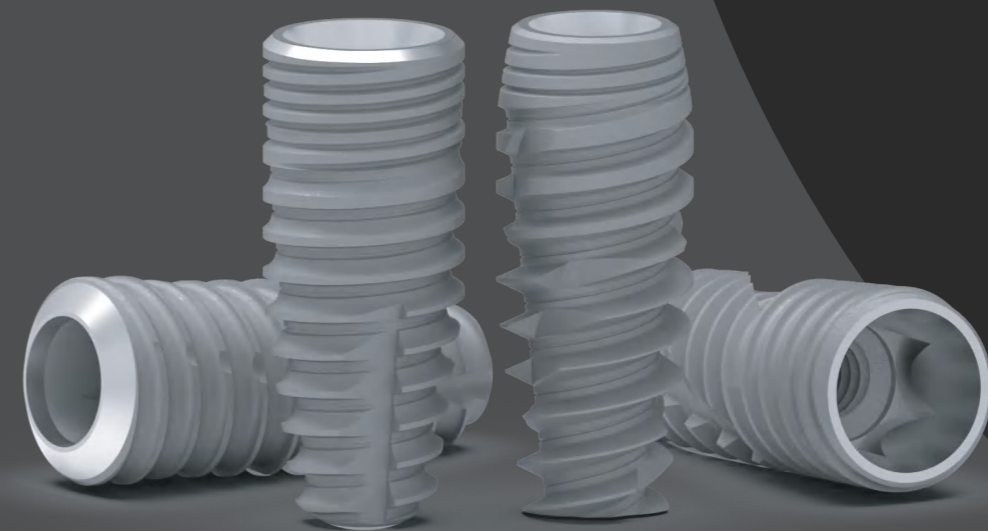
No. 18 Jincheng Road, Wujin Economic Development Zone, Changzhou, Jiangsu, China

TEL:86-0519-86391029

FAX:86-519-86398597

Email: market@trausim.com

© Jiangsu Lanling Chemical Group Co., Ltd. owns copyright and related rights, and the data, without the consent of the obligee shall not, without copying, Distribution, adapted, or transmitted to the public.





# SINCE 2010

Jiangsu Trausim Medical Instrument Co., Ltd. established in 2010, is one of the largest Chinese dental implant manufacturers. We started export business since 2018 with CE, ISO and FDA certificates. We offer clients:

- 5 series dental implant systems
- OEM service of dental implants and prosthetics
- digital products for dental labs
- dental centrifuges and instruments

## To be the most reliable Chinese dental implant brand

## Certificates



FDA



ISO 13485



CFDA

# Scan body & Digital analog



## Scan body & Digital analog

### OST

Code	Scan body spec.	Code	Digital analog(with screw)
801.1140E	OST-TS-M-III AH=6.5	801.1130	OST-TS-M-III
801.1240E	OST-TS-R-III AH=6.5	801.1230	OST-TS-R-III

### DTN

Code	Scan body spec.	Code	Digital analog(with screw)
802.1140E	DTN-SP-R-III AH=6.5	802.1130	DTN-SP-R-III

### DO

Code	Scan body spec.	Code	Digital analog(with screw)
803.5140E	DO-UF-M-III AH=6.5	803.5130	DO-UF-M-III
803.5240E	DO-UF-R-III AH=6.5	803.5230	DO-UF-R-III

### ST

Code	Scan body spec.	Code	Digital analog(with screw)
804.2140E	ST-BL-N-III AH=6.5	804.2130	ST-BL-N-III
804.2240E	ST-BL-R-III AH=6.5	804.2230	ST-BL-R-III

### ATG

Code	Scan body spec.	Code	Digital analog(with screw)
816.1140E	ATG-AX-R-III AH=6.5	816.1130	ATG-AX-R-III

### NOB

Code	Scan body spec.	Code	Digital analog(with screw)
805.1140E	NOB-ATV-N-III AH=6.5	805.1130	NOB-ATV-N-III
805.1240E	NOB-ATV-R-III AH=6.5	805.1230	NOB-ATV-R-III

### AST

Code	Scan body spec.	Code	Digital analog(with screw)
806.1140E	DSP-AST-3.0-III AH=6.5	806.1130	DSP-AST-3.0-III
806.1240E	DSP-AST-3.5/4.0-III AH=6.5	806.1230	DSP-AST-3.5/4.0-III
806.1340E	DSP-AST-4.5/5.0-III AH=6.5	806.1330	DSP-AST-4.5/5.0-III
806.3140E	DSP-ANK-R-III AH=6.5	806.3130	DSP-ANK-R-III

### BG

Code	Scan body spec.	Code	Digital analog(with screw)
807.1140E	BG-SEM-3.25/3.75-III AH=6.5	807.1130	BG-SEM-3.25/3.75-III
807.1240E	BG-SEM-4.1-III AH=6.5	807.1230	BG-SEM-4.1-III
807.1340E	BG-SEM-4.5-III AH=6.5	807.1330	BG-SEM-4.5-III
807.1440E	BG-SEM-5.5-III AH=6.5	807.1430	BG-SEM-5.5-III

### MG

Code	Scan body spec.	Code	Digital analog(with screw)
808.1140E	MG-EZ Plus-M-III AH=6.5	808.1130	MG-EZ Plus-M-III
808.1240E	MG-EZ Plus--R/W-III AH=6.5	808.1230	MG-EZ Plus--R/W-III
808.2240E	MG-ANYONE-R-III AH=6.5	808.2230	MG-ANYONE-R-III

### NEO

Code	Scan body spec.	Code	Digital analog(with screw)
820.1140E	NEO-IS-R-III AH=6.5	820.1130	NEO-IS-R-III

### SKY

Code	Scan body spec.	Code	Digital analog(with screw)
850.1140E	SKY-Blue-R-III AH=6.5	850.1130	SKY-Blue-R-III

### ST

Code	Scan body spec.	Code	Digital analog(with screw)
804.1140E	ST-TL-R-III AH=6.5	804.1130	ST-TL-R-III
804.1240E	ST-TL-W-III AH=6.5	804.1230	ST-TL-W-III