

trausim®



Let your smile brighter.

DENTAL IMPLANT

Whole series solutions
One-stop service center

Jiangsu Trausim Medical Instrument Co., Ltd.

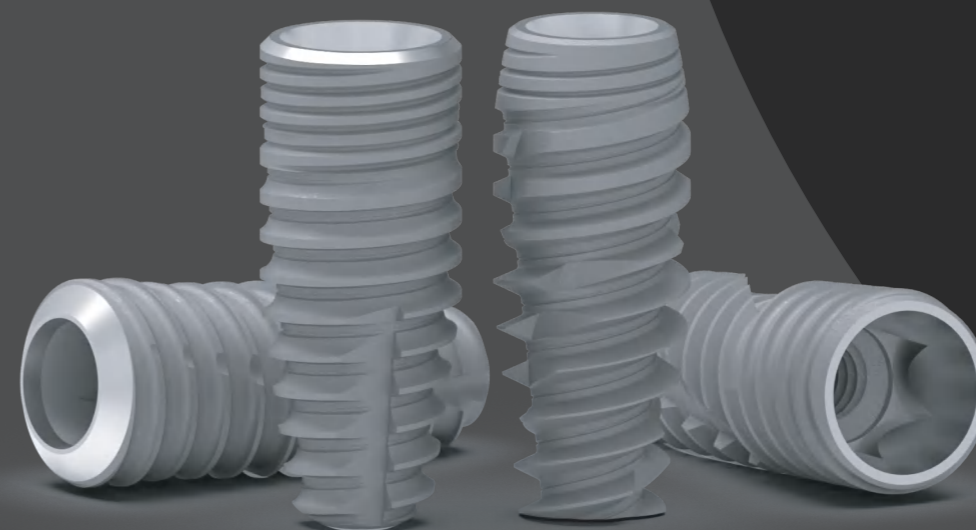
No. 18 Jincheng Road, Wujin Economic Development Zone, Changzhou, Jiangsu, China

TEL:86-0519-86391029

FAX:86-519-86398597

Email: market@trausim.com

© Jiangsu Lanling Chemical Group Co., Ltd. owns copyright and related rights, and the data, without the consent of the obligee shall not, without copying, Distribution, adapted, or transmitted to the public.





SINCE 2010

Jiangsu Trausim Medical Instrument Co., Ltd. established in 2010, is one of the largest Chinese dental implant manufacturers. We started export business since 2018 with CE, ISO and FDA certificates. We offer clients:

- 5 series dental implant systems
- OEM service of dental implants and prosthetics
- digital products for dental labs
- dental centrifuges and instruments

To be the most reliable Chinese dental implant brand

Certificates



FDA



ISO 13485



CFDA

Dental Implant Digital Guide Kit



Dental Implant Digital Guide Kit 110.5901

Note: * means optional

Drill Guider	Type-D	
● φ 2.2mm	110.2222	1
● φ 2.8mm	110.2828	2
● φ 3.5mm	110.3535	3
● φ 4.2mm	110.4242	4

Pilot Drill	BLE φ2.2mm	
L=33.4mm	110.1122	14
L=37.4mm	110.1222	15
L=41.4mm	110.1322	16



Twist Drill	BLE φ2.8mm	
L=33.4mm	110.1129	17
L=37.4mm	110.1229	18
L=41.4mm	110.1329	19

Drill Guider	Type-C	
H2	110.0202	5
H4	110.0204	6
H6	110.0206	7

Twist Drill	BLE φ3.5mm	
L=33.4mm	110.1136	20
L=37.4mm	110.1236	21
L=41.4mm	110.1336	22



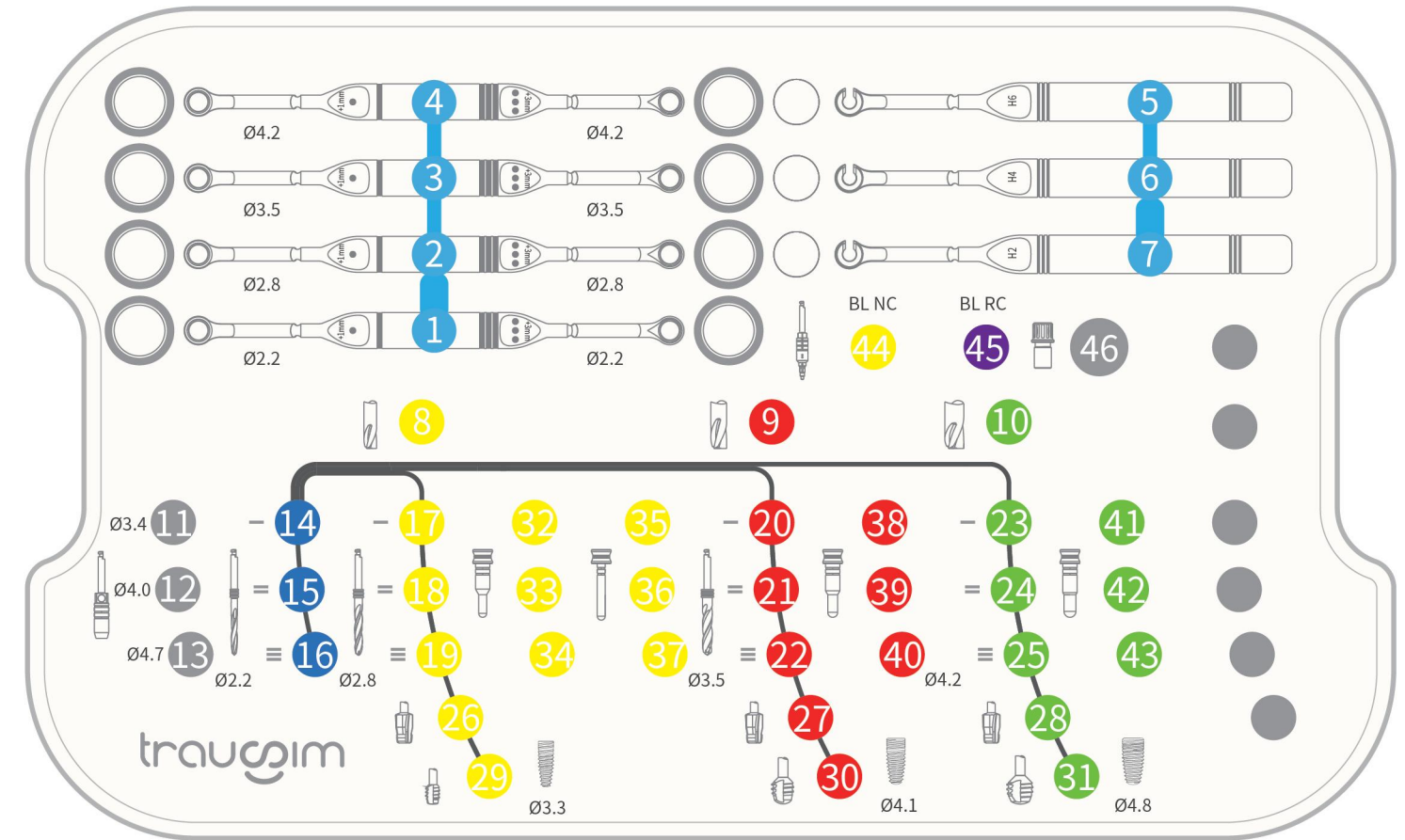
Milling Drill		
● φ 2.8mm	110.1628	8
● φ 3.5mm	110.1635	9
● φ 4.2mm	110.1642	10

Twist Drill	BLE φ4.2mm	
L=33.4mm	110.1142	23
L=37.4mm	110.1242	24
L=41.4mm	110.1342	25



Tissue Punch		
φ 3.4mm	110.1734	11
φ 4.0mm	110.1740	12
φ 4.7mm	110.1747	13

Profile Drill	BLE	
● φ 3.3mm	110.1433	26
● φ 4.1mm	110.1441	27
● φ 4.8mm	110.1448	28



Tap	BLE L=25mm	
● φ 3.3mm	110.1533	29
● φ 4.1mm	110.1541	30
● φ 4.8mm	110.1548	31

Ratchet Instrument		
	026.0108	47



Positioning Pin	BLE	
● φ 5.1/φ2.8mm	110.1028	32 33 34
● φ 2.8mm	110.1029	35 36 37
● φ 5.1/φ3.5mm	110.1035	38 39 40
● φ 5.1/φ4.2mm	110.1042	41 42 43

Torque Control Device	70N	
	034.0570	48



Implant Driver	BLE	
● NC	110.5010	44
● RC	110.5020	45

Positioner	BLE	
● φ 2.2×6mm	* 110.4922	49
● φ 2.8×6mm	* 110.4928	50
● φ 5.1×5mm	* 110.4950	51



Converter	BLE φ 6.0mm L=18mm	
	059.0410	46

