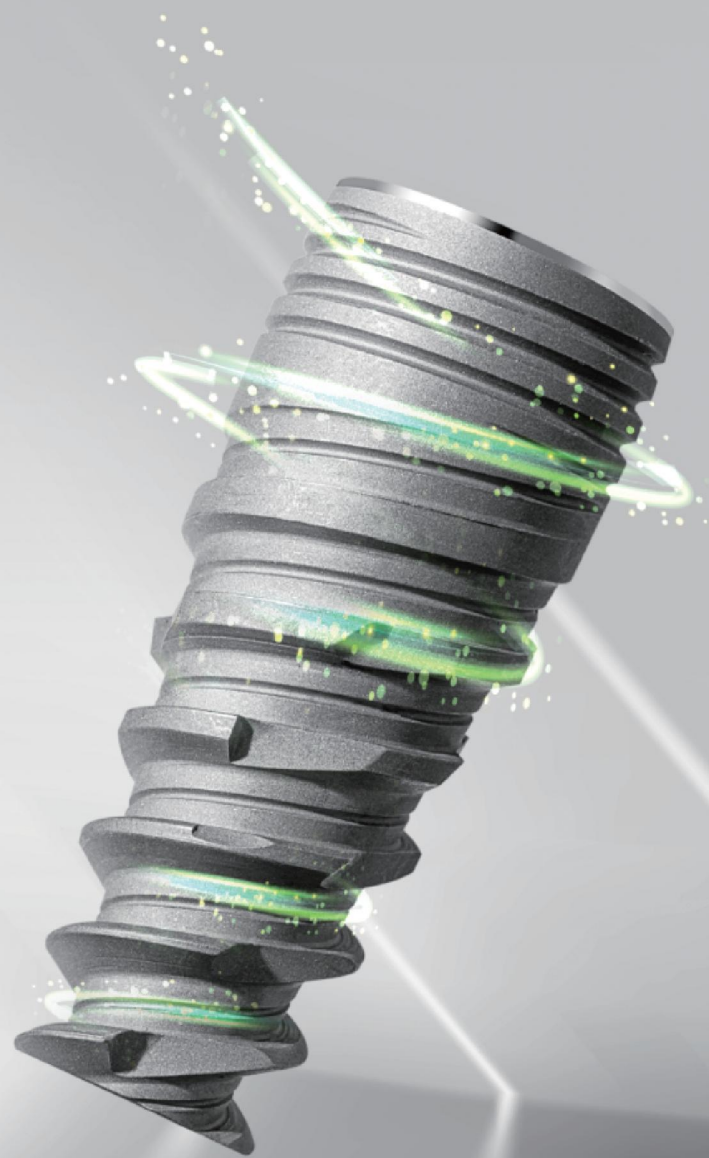


NT Nebula Tapered



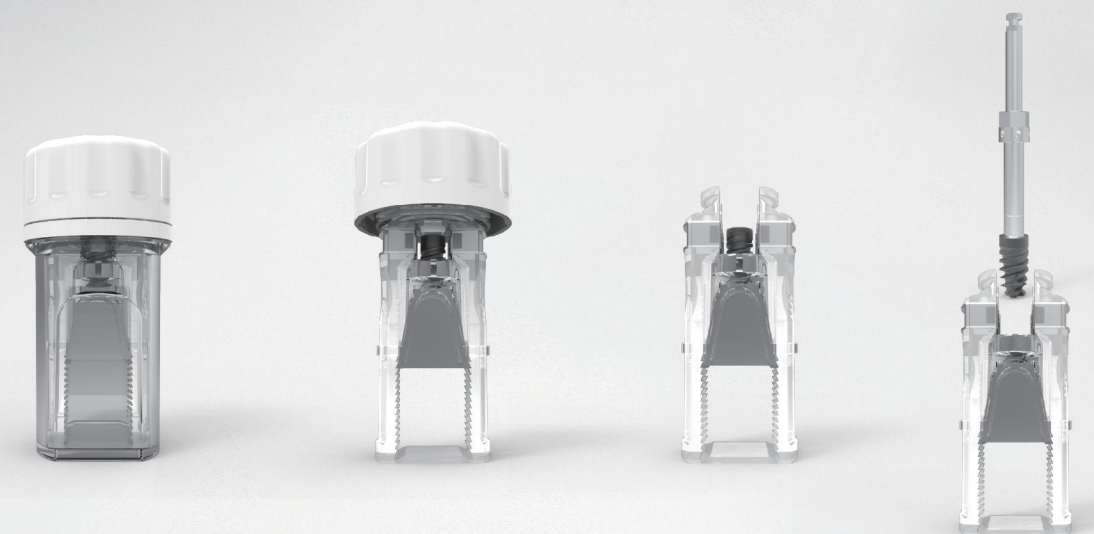
- NP=Narrow Platform · RP=Regular Platform
- WP=Wide Platform



Surface Treatment : **SLA**

Material : **Medical Titanium Grade 4**
(Cold drawn, ZAPP, Germany)

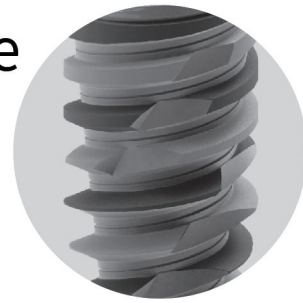
CNC Lathe Machine : **Citizen and Tornos**



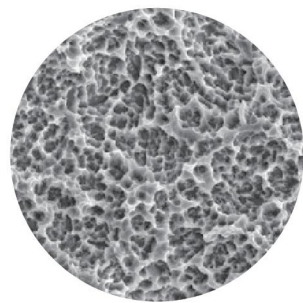
Stronger Self-taping, Faster Healing Process

Double thread structure
Innovative thread distance
Faster implantation

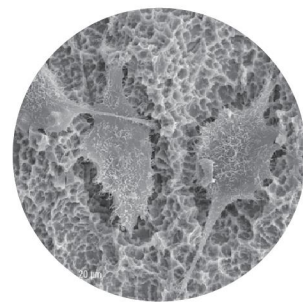
Each turn makes the implant advance about 2.4mm, so the implantation speed is 3-4 times faster than the average implant



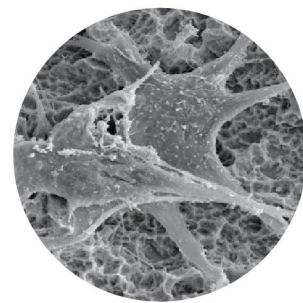
Large particle sandblasting + acid etched surface



Multistage micro-pit structure



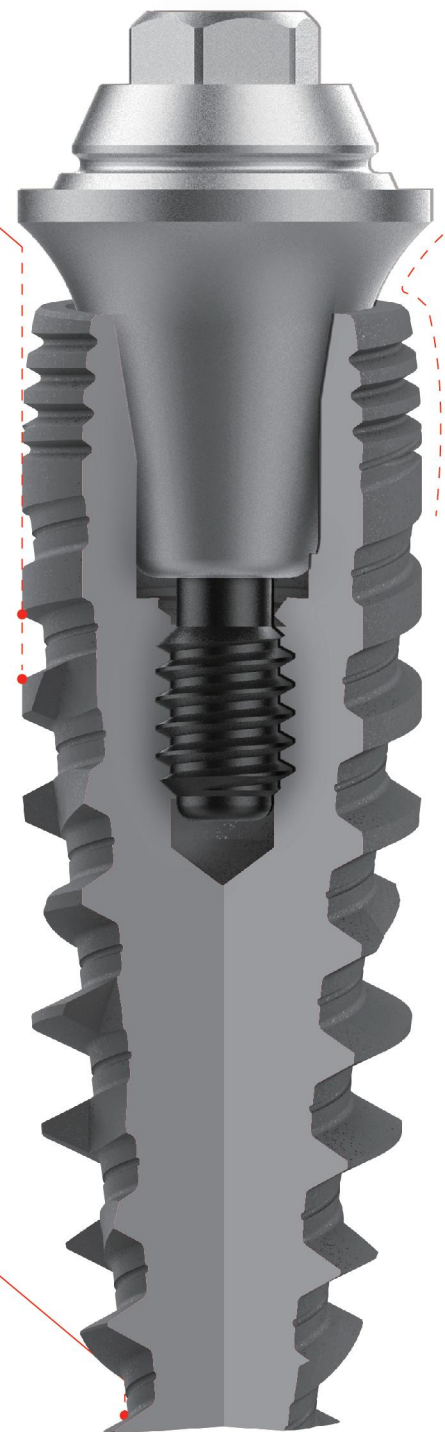
6-8 weeks healing time





Cell pseudopodium

Double drill blade root tip design
Super self-taping performance

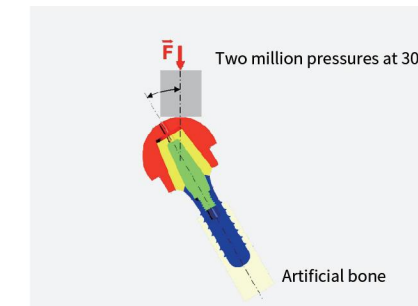
Change the orientation of implant to achieve the best three-dimensional position



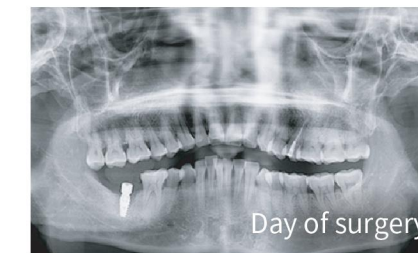
Implant

NP	L	Φ 3.5mm	RP	L	Φ 4.3mm	Φ 5.0mm
	8.5mm	050.3508		8.5mm	050.4308	050.5008
	10mm	050.3510		10mm	050.4310	050.5010
	11.5mm	050.3511		11.5mm	050.4311	050.5011
	13mm	050.3513		13mm	050.4313	050.5013
	15mm	050.3515		15mm	050.4315	-

▽ Excellent stability for tilting 30° force test



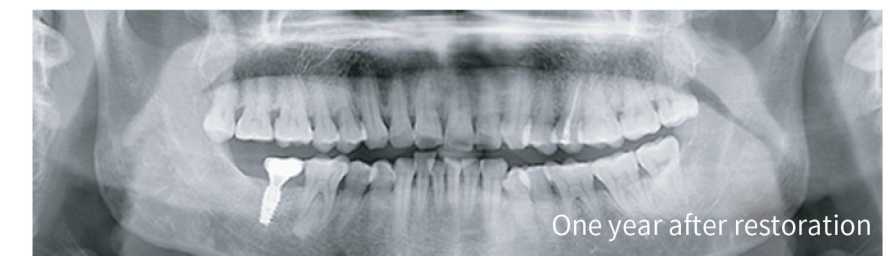
▽ Clinical manifestations of repair



Day of surgery



Restoration day



One year after restoration



▽ Three years after restoration
Neck platform wrapped with new bone






Closure screw

Closure screw	NP	RP
 051.1310		 051.2310


Prosthetic components

Healing cap	NP	RP
	Conical	Conical
	3.0mm	3.0mm
	5.0mm	5.0mm
	Curve	Curve
	3.0mm	3.0mm
	5.0mm	5.0mm


Angled abutment	NP	RP
	0°	0°
	1.5mm	1.5mm
	15°	15°
	1.5mm	1.5mm


Narrow abutment	NP	RP
	7.0mm	7.0mm
	9.0mm	9.0mm



Temporary abutment(bridge)	NP	RP
	1.5mm	1.5mm
	053.1241	053.2241




Locator	NP	RP
		
	052.1631	052.2631

H=1.0mm	052.1631	052.2631
H=2.0mm	052.1632	052.2632
H=3.0mm	052.1633	052.2633
H=4.0mm	052.1634	052.2634
H=5.0mm	052.1635	052.2635
H=6.0mm	052.1636	052.2636

Cap	R	W
	053.1754	053.1774


Temporary cylinder R

053.1561


Abutment	NP	RP
	0.5mm	0.5mm
	1.0mm	1.0mm
	1.5mm	1.5mm
	0.5mm	0.5mm
	1.0mm	1.0mm
	1.5mm	1.5mm






Multi-unit abutment	NP	RP
	0°	0°
	1.5mm	1.5mm
	17°	17°
	1.5mm	1.5mm
	30°	30°
	1.5mm	1.5mm

Abutment screw	NP	RP
	051.1416	051.2411

Impression components

Impression tray (closed tray)	NP	RP
	3.6mm	3.6mm
	5.0mm	5.0mm
	6.0mm	6.0mm

Impression tray (open tray)	NP	RP
	3.6mm	3.6mm
	5.0mm	5.0mm
	6.0mm	6.0mm

Impression tray (open tray)	For bridge	For multi-unit	Analog	For multi-unit
				
NP 058.1107	RP 058.2113	058.1109	NP 058.1201	RP 058.2201

NT Surgical Kit

Note: * means optional

059.0460



Precision drill



059.0020T

Twist drill

L=7-15mm



Φ=2.0mm 059.0030T

Twist step drill

L=7-15mm



Φ2.4/2.8mm 059.0060T

Φ2.8/3.2mm 059.0090T

Φ3.2/3.6mm 059.0120T

Φ3.8/4.2mm 059.0150T

Φ4.2/4.6mm 059.0180T

Drill extension



026.0086

Parallel pin



Φ=2.0mm 059.0300

Connector



059.0410

Tap

L=7-15mm



Φ 3.5mm * 059.0230T

Φ 4.3mm * 059.0240T

Φ 5.0mm * 059.0250T

Screwdriver



059.0480



Handpiece

L=27mm

L=32mm

059.0440

059.0450

Implant driver

L=28mm

L=37mm



NP

059.0370

059.0371



RP

059.0380

059.0381

Multi-unit abutment driver



L=19mm

038.1383

Torque control device



034.0570

Depth gauge



059.0310

Screwdriver NT



L=21mm

* 059.0580