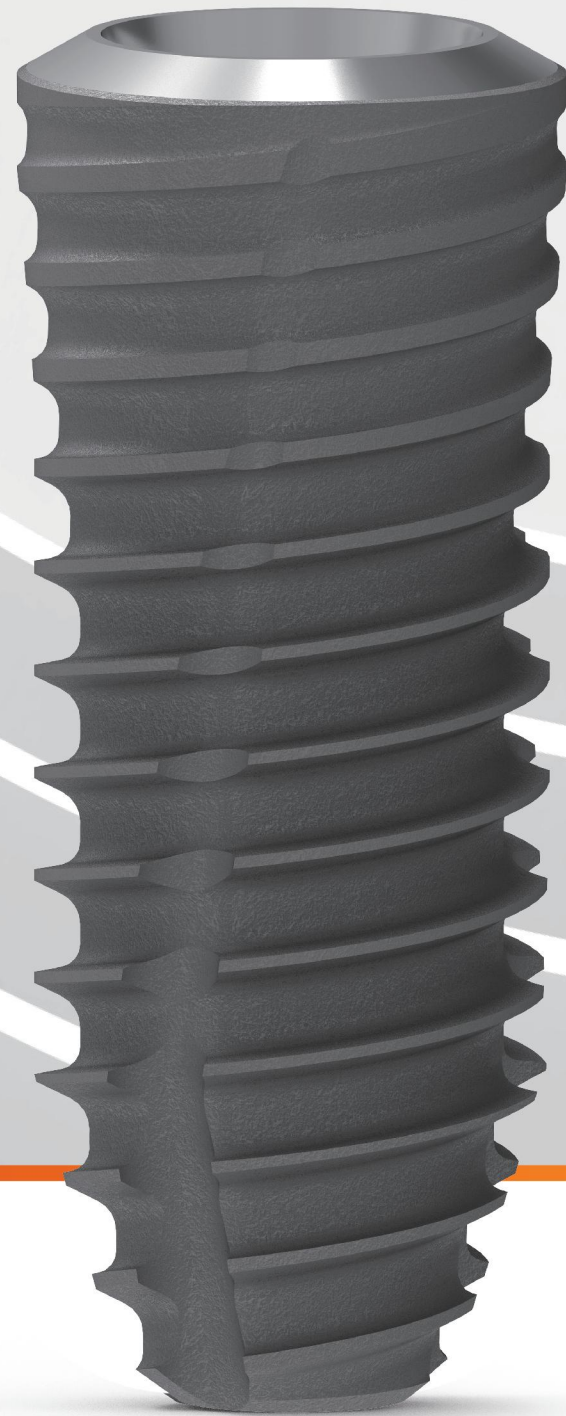




RD Dental Implant



Dental Implant

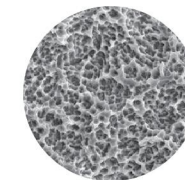
Rorshell RD	MP	RP						
D	φ3.7mm	φ3.7mm	φ4.0mm	φ4.5mm	φ5.0mm	φ6.0mm	φ7.0mm	
 L=8.0mm	RB06L3708	RB06L3608	RB06L4008	RB06L4508	RB06L5008	RB06L6008	RB06L7008	
L=10.0mm	RB06L3710	RB06L3610	RB06L4010	RB06L4510	RB06L5010	RB06L6010	RB06L7010	
L=12.0mm	RB06L3712	RB06L3612	RB06L4012	RB06L4512	RB06L5012	RB06L6012	RB06L7012	
L=14.0mm	RB06L3714	RB06L3614	RB06L4014	RB06L4514	RB06L5014	-	-	
 L=7.0mm	RB06L3707	RB06L3607	RB06L4007	RB06L4507	RB06L5007	RB06L6007	RB06L7007	



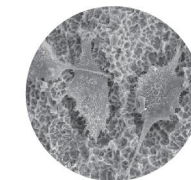
Tapered Design
Stronger primary stability



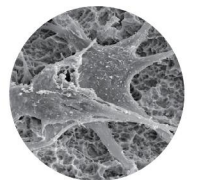
Large particle sandblasting + acid etched surface



Multistage micro-pit structure



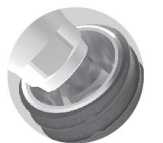
6-8 weeks healing time



Cell pseudopodium

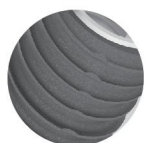
Biological linkage

· The load can be evenly distributed on the implant to effectively reduce bone resorption






Double thread structure

· The increase in thread height significantly improves implant primary stability
· The double thread design can effectively shorten the implantation time





Abutment



Multi-unit abutment	0°	MP	RP	RP	Multi-unit abutment	15°	Single	Bridge
	Φ 4.5mm	Φ 4.5mm	Φ 5.5mm				Φ 4.5mm	Φ 4.5mm
GH=1.0mm	RB060.1260	RB060.1240	-		GH=1.0mm		RB060.1331	RB060.1331N
GH=1.5mm	RB060.1261	RB060.1241	RB060.1251		GH=2.0mm		RB060.1332	RB060.1332N
GH=2.5mm	RB060.1262	RB060.1242	RB060.1252		Multi-unit abutment	30°	Single	Bridge
GH=3.5mm	RB060.1263	RB060.1243	RB060.1253				Φ 4.5mm	Φ 4.5mm
GH=4.5mm	RB060.1264	RB060.1244	RB060.1254					
GH=5.5mm	RB060.1265	RB060.1245	RB060.1255		GH=1.0mm		RB060.1341	RB060.1341N
					GH=2.0mm		RB060.1342	RB060.1342N



Multi-unit abutment	15°	Single	Bridge	Single	Bridge
		Φ 4.5mm	Φ 4.5mm	Φ 5.5mm	Φ 5.5mm
GH=1.0mm		RB060.1311	RB060.1311N	-	-
GH=1.5mm		-	-	RB060.1313	RB060.1313N
GH=2.0mm		RB060.1312	RB060.1312N	-	-
GH=3.0mm		-	-	RB060.1314	RB060.1314N


Multi-unit abutment	30°	Single	Bridge	Single	Bridge
		Φ 4.5mm	Φ 4.5mm	Φ 5.5mm	Φ 5.5mm
GH=1.0mm		RB060.1321	RB060.1321N	-	-
GH=1.5mm		-	-	RB060.1323	RB060.1323N
GH=2.0mm		RB060.1322	RB060.1322N	-	-
GH=3.0mm		-	-	RB060.1324	RB060.1324N


Closure screw			
		Φ 3.6mm	
			Φ 3.6mm
MP		RB062.0015	
			RP
			RB062.0016


Abutment

Angled abutment (single)	MP	RP	RP	Angled abutment (bridge)	MP	RP	RP
 15°	Φ 4.5mm	Φ 4.5mm	Φ 5.5mm	 15°	Φ 4.5mm	Φ 4.5mm	Φ 5.5mm
GH=1.5mm	RB062.3615	RB062.3415	RB062.3515	GH=1.5mm	RB062.3615N	RB062.3415N	RB062.3515N
GH=2.0mm	RB062.3620	RB062.3420	RB062.3520	GH=2.0mm	RB062.3620N	RB062.3420N	RB062.3520N
GH=2.5mm	RB062.3625	RB062.3425	RB062.3525	GH=2.5mm	RB062.3625N	RB062.3425N	RB062.3525N
GH=3.5mm	RB062.3635	RB062.3435	RB062.3535	GH=3.5mm	RB062.3635N	RB062.3435N	RB062.3535N
GH=4.0mm	RB062.3640	RB062.3440	RB062.3540	GH=4.0mm	RB062.3640N	RB062.3440N	RB062.3540N

Angled abutment (single)	MP	RP	RP	Angled abutment (bridge)	MP	RP	RP
 25°	Φ 4.5mm	Φ 4.5mm	Φ 5.5mm	 25°	Φ 4.5mm	Φ 4.5mm	Φ 5.5mm
GH=1.0mm	RB062.4610	RB062.4410	RB062.4510	GH=1.0mm	RB062.4610N	RB062.4410N	RB062.4510N
GH=1.5mm	RB062.4615	RB062.4415	RB062.4515	GH=1.5mm	RB062.4615N	RB062.4415N	RB062.4515N
GH=2.0mm	RB062.4620	RB062.4420	RB062.4520	GH=2.0mm	RB062.4620N	RB062.4420N	RB062.4520N
GH=2.5mm	RB062.4625	RB062.4425	RB062.4525	GH=2.5mm	RB062.4625N	RB062.4425N	RB062.4525N
GH=3.5mm	RB062.4635	RB062.4435	RB062.4535	GH=3.5mm	RB062.4635N	RB062.4435N	RB062.4535N
GH=4.0mm	RB062.4640	RB062.4440	RB062.4540	GH=4.0mm	RB062.4640N	RB062.4440N	RB062.4540N

Locator	MP	RP
	Φ 3.5mm	Φ 3.5mm
GH=1.0mm	RB062.5710	RB062.5610
GH=2.0mm	RB062.5720	RB062.5620
GH=3.0mm	RB062.5730	RB062.5630
GH=4.0mm	RB062.5740	RB062.5640
GH=5.0mm	RB062.5750	RB062.5650
GH=6.0mm	RB062.5760	RB062.5660
GH=7.0mm	RB062.5770	RB062.5670



Temporary abutment(single)	MP	RP
	Φ 4.5mm	Φ 4.5mm
GH=1.0mm	RB062.5510	RB062.5410

Angled abutment(bridge)	MP	RP
	Φ 4.5mm	Φ 4.5mm
GH=1.0mm	RB062.5510N	RB062.5410N

Abutment



Healing cap MP

Healing cap RP

Healing cap MP			Healing cap RP				
	Φ 4.0mm	Φ 4.5mm		Φ 4.0mm	Φ 4.5mm	Φ 5.5mm	Φ 6.5mm
H=2.0mm	RB062.1412	RB062.1462	H=2.0mm	RB062.1402	RB062.1452	RB062.1552	RB062.1652
H=3.5mm	RB062.1413	RB062.1463	H=3.5mm	RB062.1403	RB062.1453	RB062.1553	RB062.1653
H=5.0mm	RB062.1415	RB062.1465	H=5.0mm	RB062.1405	RB062.1455	RB062.1555	RB062.1655
H=7.0mm	RB062.1417	RB062.1467	H=7.0mm	RB062.1407	RB062.1457	RB062.1557	RB062.1657

Cementable abutment(single) MP

Cementable abutment(single) RP

Cementable abutment(single) MP		Cementable abutment(single) RP					
	AH=5.5mm	Φ 4.5mm		AH=5.5mm	Φ 4.5mm	Φ 5.5mm	Φ 6.5mm
GH=1.0mm		RB062.2310	GH=1.0mm		RB062.2410		
GH=1.5mm		RB062.2315	GH=1.5mm		RB062.2415	RB062.2515	RB062.2615
GH=2.5mm		RB062.2325	GH=2.5mm		RB062.2425	RB062.2525	RB062.2625
GH=3.5mm		RB062.2335	GH=3.5mm		RB062.2435	RB062.2535	RB062.2635
GH=4.5mm		RB062.2345	GH=4.5mm		RB062.2445	RB062.2545	RB062.2645
GH=5.5mm		RB062.2355	GH=5.5mm		RB062.2455	RB062.2555	RB062.2655


Cementable abutment(bridge) MP






Cementable abutment(bridge) RP

Cementable abutment(bridge) MP		Cementable abutment(bridge) RP					
	AH=5.5mm	Φ 4.5mm		AH=5.5mm	Φ 4.5mm	Φ 5.5mm	Φ 6.5mm
GH=1.0mm		RB062.2310N	GH=1.0mm		RB062.2410N		
GH=1.5mm		RB062.2315N	GH=1.5mm		RB062.2415N	RB062.2515N	RB062.2615N
GH=2.5mm		RB062.2325N	GH=2.5mm		RB062.2425N	RB062.2525N	RB062.2625N
GH=3.5mm		RB062.2335N	GH=3.5mm		RB062.2435N	RB062.2535N	RB062.2635N
GH=4.5mm		RB062.2345N	GH=4.5mm		RB062.2445N	RB062.2545N	RB062.2645N
GH=5.5mm		RB062.2355N	GH=5.5mm		RB062.2455N	RB062.2555N	RB062.2655N

Base (Ti)



Abutment screw

Base (Ti)		
	Φ 4.5mm	Φ 5.5mm
Single	RB060.1500	RB060.1520
Bridge	RB060.1510	RB060.1530

Abutment screw					
	Multi-unit		RB063.0030		
	MP	RB063.0070		RP	RB063.0010
	MP Multi-unit	RB063.0080		RP Multi-unit	RB063.0020

Prosthetic components



Multi-unit abutment open tray impression cap				Multi-unit abutment closed tray impression cap			
	Single	Bridge		Single	Bridge		
	Φ 4.5mm	RB068.1100	RB068.1110		Φ 4.5mm	RB068.1140	RB068.1150
	Φ 5.5mm	RB068.1120	RB068.1130		Φ 5.5mm	RB068.1160	RB068.1170

Protect cap

Protect cap (polished)

Protect cap			Protect cap (polished)		
	Φ 4.5mm	RB068.1200		Φ 4.5mm	RB068.1220
	Φ 5.5mm	RB068.1210		Φ 5.5mm	RB068.1230

Multi-unit abutment analog

Multi-unit abutment analog		
	Φ 4.5mm	Φ 5.5mm
	RB068.1010	RB068.1020


Locator analog

Locator analog	
	RB068.1050


Implant analog

Implant analog		MP	RP
	RB068.1030		RB068.1040


Implant open tray impression cap(single)

	MP		RP	
	L=11mm	L=15mm	L=11mm	L=15mm
				
Φ 4.0mm	RB068.1660	RB068.1680	RB068.1260	RB068.1280
Φ 4.5mm	RB068.1700	RB068.1720	RB068.1300	RB068.1320
Φ 5.5mm	-	-	RB068.1340	RB068.1360
Φ 6.5mm	-	-	RB068.1380	RB068.1400


Implant open tray impression cap(bridge)

	MP		RP	
	L=11mm	L=15mm	L=11mm	L=15mm
				
Φ 4.0mm	RB068.1670	RB068.1690	RB068.1270	RB068.1290
Φ 4.5mm	RB068.1710	RB068.1730	RB068.1310	RB068.1330
Φ 5.5mm	-	-	RB068.1350	RB068.1370
Φ 6.5mm	-	-	RB068.1390	RB068.1410

Implant closed tray impression cap(single)

	MP		RP	
	L=11mm	L=15mm	L=11mm	L=15mm
				
Φ 4.0mm	RB068.1420	RB068.1440	RB068.1500	RB068.1520
Φ 4.5mm	RB068.1460	RB068.1480	RB068.1540	RB068.1560
Φ 5.5mm	-	-	RB068.1580	RB068.1600
Φ 6.5mm	-	-	RB068.1620	RB068.1640

Implant closed tray impression cap(bridge)

	MP		RP	
	L=11mm	L=15mm	L=11mm	L=15mm
				
Φ 4.0mm	RB068.1430	RB068.1450	RB068.1510	RB068.1530
Φ 4.5mm	RB068.1470	RB068.1490	RB068.1550	RB068.1570
Φ 5.5mm	-	-	RB068.1590	RB068.1610
Φ 6.5mm	-	-	RB068.1630	RB068.1650