
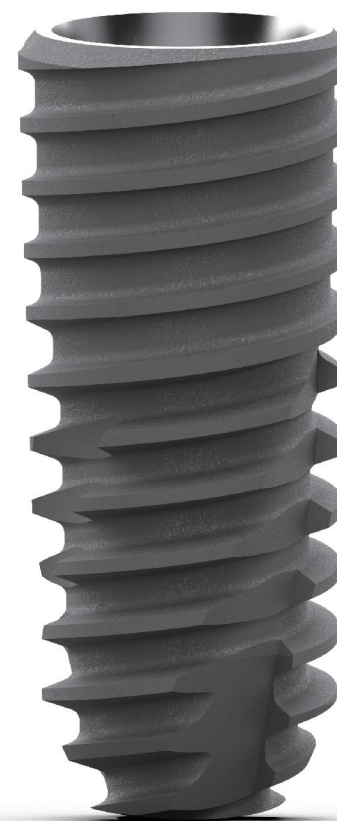


RS Dental Implant



Dental Implant

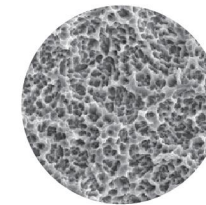
	RS	MP	RP		
	D	φ3.5mm	φ4.0mm	φ4.5mm	φ5.0mm
	L=7.0mm	-	RB040.4007	RB040.4507	RB040.5007
	L=8.5mm	RB040.3508	RB040.4008	RB040.4508	RB040.5008
	L=10.0mm	RB040.3510	RB040.4010	RB040.4510	RB040.5010
	L=11.5mm	RB040.3511	RB040.4011	RB040.4511	RB040.5011
	L=13.0mm	RB040.3513	RB040.4013	RB040.4513	RB040.5013



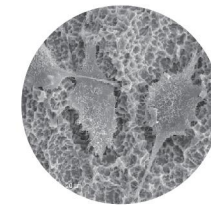
Hex Connection
Morse taper 11°



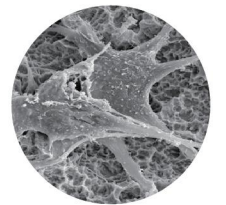
Large particle sandblasting + acid etched surface



Multistage micro-pit structure



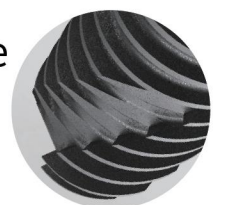
6-8 weeks healing time



Cell pseudopodium


Screw thread cutting edge

Strong self-taping performance makes it easier to change the direction of implantation and increases primary stability




Abutment


Angled abutment(single) MP RP

	MP	RP	
	Φ 4.5mm	Φ 5.0mm	Φ 6.0mm
GH=2.0mm 17°A	RB044.1428A	RB044.2528A	RB044.2628A
GH=2.0mm 17°B	RB044.1428B	RB044.2528B	RB044.2628B
GH=4.0mm 17°A	RB044.1448A	RB044.2548A	RB044.2648A
GH=4.0mm 17°B	RB044.1448B	RB044.2548B	RB044.2648B


Angled abutment(bridge) MP RP

	MP	RP	
	Φ 4.5mm	Φ 6.0mm	Φ 5.0mm
GH=2.0mm 17°	RB044.1428N	RB044.2628N	RB044.2528N
GH=4.0mm 17°	RB044.1448N	RB044.2648N	RB044.2548N



Temporary abutment MP (single) MP (bridge)

	MP (single)	MP (bridge)
	Φ 4.0mm	Φ 4.0mm
GH=1.0mm	RB045.1411	RB045.1411N
GH=3.0mm	RB045.1431	RB045.1431N



临时基台 RP (single) RP (bridge)

	RP (single)	RP (bridge)
	Φ 4.5mm	Φ 4.5mm
GH=1.0mm	RB045.2411	RB045.2411N
GH=3.0mm	RB045.2431	RB045.2431N

Multi-unit abutment MP

	MP		
	0°		17°
GH=1.0mm	RB046.1101	GH=2.5mm	RB046.1112
GH=2.0mm	RB046.1102	GH=3.0mm	RB046.1113
GH=3.0mm	RB046.1103	GH=4.0mm	RB046.1114
GH=4.0mm	RB046.1104		
GH=5.0mm	RB046.1105		


Multi-unit abutment RP

	RP		
	0°		17°
GH=1.0mm	RB046.2101	GH=2.5mm	RB046.2112
GH=2.0mm	RB046.2102	GH=3.0mm	RB046.2113
GH=3.0mm	RB046.2103	GH=4.0mm	RB046.2114
GH=4.0mm	RB046.2104		
GH=5.0mm	RB046.2105		

Multi-unit abutment MP

	MP	
		30°
GH=3.5mm		RB046.1133
GH=4.0mm		RB046.1134
GH=5.0mm		RB046.1135

Multi-unit abutment RP

	RP	
		30°
GH=3.5mm		RB046.2133
GH=4.0mm		RB046.2134
GH=5.0mm		RB046.2135



Transfer abutment(single) RP

	RP				
	Φ 4.5mm	AH=5.5mm		Φ 5.0mm	AH=4.0mm AH=5.5mm AH=7.0mm
GH=1.0mm		RB043.2415		GH=1.0mm	RB043.2514 RB043.2515 RB043.2517
GH=2.0mm		RB043.2425		GH=2.0mm	RB043.2524 RB043.2525 RB043.2527
GH=3.0mm		RB043.2435		GH=3.0mm	RB043.2534 RB043.2535 RB043.2537
GH=4.0mm		RB043.2445		GH=4.0mm	RB043.2544 RB043.2545 RB043.2547
GH=5.0mm		RB043.2455		GH=5.0mm	RB043.2554 RB043.2555 RB043.2557
	Φ 6.0mm	AH=4.0mm	AH=5.5mm	AH=7.0mm	Φ 7.0mm AH=5.5mm
GH=1.0mm		RB043.2614	RB043.2615	RB043.2617	GH=1.0mm RB043.2715
GH=2.0mm		RB043.2624	RB043.2625	RB043.2627	GH=2.0mm RB043.2725
GH=3.0mm		RB043.2634	RB043.2635	RB043.2637	GH=3.0mm RB043.2735
GH=4.0mm		RB043.2644	RB043.2645	RB043.2647	GH=4.0mm RB043.2745
GH=5.0mm		RB043.2654	RB043.2655	RB043.2657	GH=5.0mm RB043.2755

Transfer abutment(bridge) RP

	RP				
	Φ 4.5mm	AH=5.5mm		Φ 5mm	AH=4.0mm AH=5.5mm AH=7.0mm
GH=1.0mm		RB043.2415N		GH=1.0mm	RB043.2514N RB043.2515N RB043.2517N
GH=2.0mm		RB043.2425N		GH=2.0mm	RB043.2524N RB043.2525N RB043.2527N
GH=3.0mm		RB043.2435N		GH=3.0mm	RB043.2534N RB043.2535N RB043.2537N
GH=4.0mm		RB043.2445N		GH=4.0mm	RB043.2544N RB043.2545N RB043.2547N
GH=5.0mm		RB043.2455N		GH=5.0mm	RB043.2554N RB043.2555N RB043.2557N
	Φ 6.0mm	AH=4.0mm	AH=5.5mm	AH=7.0mm	Φ 7.0mm AH=5.5mm
GH=1.0mm		RB043.2614N	RB043.2615N	RB043.2617N	GH=1.0mm RB043.2715N
GH=2.0mm		RB043.2624N	RB043.2625N	RB043.2627N	GH=2.0mm RB043.2725N
GH=3.0mm		RB043.2634N	RB043.2635N	RB043.2637N	GH=3.0mm RB043.2735N
GH=4.0mm		RB043.2644N	RB043.2645N	RB043.2647N	GH=4.0mm RB043.2745N
GH=5.0mm		RB043.2654N	RB043.2655N	RB043.2657N	GH=5.0mm RB043.2755N

Transfer abutment(bridge) MP (single) (bridge) Locator MP RP

	MP (single)	(bridge)	Locator	MP	RP
	AH=5.5mm	Φ 4.5mm	Φ 4.5mm		Φ 3.7mm Φ 3.7mm
GH=1.0mm		RB043.1415	RB043.1415N	GH=1mm	RB047.1301 RB047.2301
GH=2.0mm		RB043.1425	RB043.1425N	GH=2mm	RB047.1302 RB047.2302
GH=3.0mm		RB043.1435	RB043.1435N	GH=3mm	RB047.1303 RB047.2303
GH=4.0mm		RB043.1445	RB043.1445N	GH=4mm	RB047.1304 RB047.2304
GH=5.0mm		RB043.1455	RB043.1455N	GH=5mm	RB047.1305 RB047.2305



Prosthetic components




Impression cap open tray(hex) MP

	L=11mm	Φ 4.0mm	Φ 4.5mm
		RB048.1100	RB048.1110
	L=15mm	Φ 4.0mm	Φ 4.5mm
		RB048.1140	RB048.1150


Impression cap open tray(non-hex) MP

	L=11mm	Φ 4.0mm	Φ 4.5mm
		RB048.1120	RB048.1130
	L=15mm	Φ 4.0mm	Φ 4.5mm
		RB048.1160	RB048.1170


Impression cap open tray multi-unit(hex)

	Φ 4.8mm	RB048.2590
---	---------	------------


Impression cap open tray multi-unit(non-hex)

	Φ 4.8mm	RB048.2600
---	---------	------------

Impression cap open tray(hex) RP

	L=11mm	L=15mm	
	Φ 4.0mm	RB048.2100	RB048.2200
	Φ 4.5mm	RB048.2110	RB048.2210
	Φ 5.0mm	RB048.2120	RB048.2220
	Φ 6.0mm	RB048.2130	RB048.2230
	Φ 7.0mm	RB048.2140	RB048.2240


Impression cap open tray(non-hex) RP

	L=11mm	L=15mm	
	Φ 4.0mm	RB048.2150	RB048.2250
	Φ 4.5mm	RB048.2160	RB048.2260
	Φ 5.0mm	RB048.2170	RB048.2270
	Φ 6.0mm	RB048.2180	RB048.2280
	Φ 7.0mm	RB048.2190	RB048.2290



Analog

	MP	RP
	RB048.1010	RB048.2010

Multi-unit abutment analog

	Φ 4.8mm	RB048.2050
---	---------	------------

Abutment screw

	MP	RP
	RB041.1311 (Regular)	RB041.2321 (Regular)
	RB041.1312 (Multi-unit)	RB041.2322 (Multi-unit)
	RB041.1313 (Multi-unit)	

Closure screw MP

	RP	
		
H=0.4mm	RB041.1000	RB041.2000
H=2.0mm	RB041.1002	RB041.2002


Impression cap closed tray(hex) MP

	L=11mm	Φ 4.0mm	Φ 4.5mm
		RB048.1180	RB048.1190
	L=14mm	Φ 4.0mm	Φ 4.5mm
		RB048.1220	ORB48.1230


Impression cap closed tray(non-hex) MP

	L=11mm	Φ 4.0mm	Φ 4.5mm
		RB048.1200	RB048.1210
	L=14mm	Φ 4.0mm	Φ 4.5mm
		RB048.1240	RB048.1250


Temporary cylinder

	Φ 4.8mm	RB046.1248
---	---------	------------

Healing cap MP

	Φ 4.0mm	Φ 4.5mm	
	H=3.0mm	RB041.1243	RB041.1253
	H=4.0mm	RB041.1244	RB041.1254
	H=5.0mm	RB041.1245	RB041.1255
	H=7.0mm	RB041.1247	RB041.1257


Healing cap RP

	Φ 4.0mm	Φ 5.0mm	Φ 6.0mm	Φ 7.0mm	
	H=3.0mm	RB041.2243	RB041.2253	RB041.2263	RB041.2273
	H=4.0mm	RB041.2244	RB041.2254	RB041.2264	RB041.2274
	H=5.0mm	RB041.2245	RB041.2255	RB041.2265	RB041.2275
	H=7.0mm	RB041.2247	RB041.2257	RB041.2267	RB041.2277



Impression cap closed tray(hex) RP

	L=11mm	L=14mm	
	Φ 4.0mm	RB048.2300	RB048.2400
	Φ 4.5mm	RB048.2310	RB048.2410
	Φ 5.0mm	RB048.2320	RB048.2420
	Φ 6.0mm	RB048.2330	RB048.2430
	Φ 7.0mm	RB048.2340	RB048.2440

Impression cap closed tray(non-hex) RP

	L=11mm	L=14mm	
	Φ 4.0mm	RB048.2350	RB048.2450
	Φ 4.5mm	RB048.2360	RB048.2460
	Φ 5.0mm	RB048.2370	RB048.2470
	Φ 6.0mm	RB048.2380	RB048.2480
	Φ 7.0mm	RB048.2390	RB048.2490

Protect cap

Φ 4.8mm	Multi-unit	Multi-unit(bridge)
		
	RB048.2710	RB048.2700